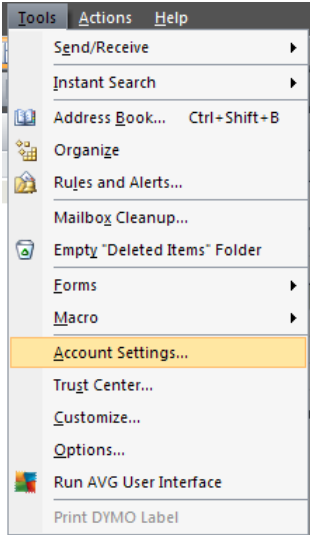
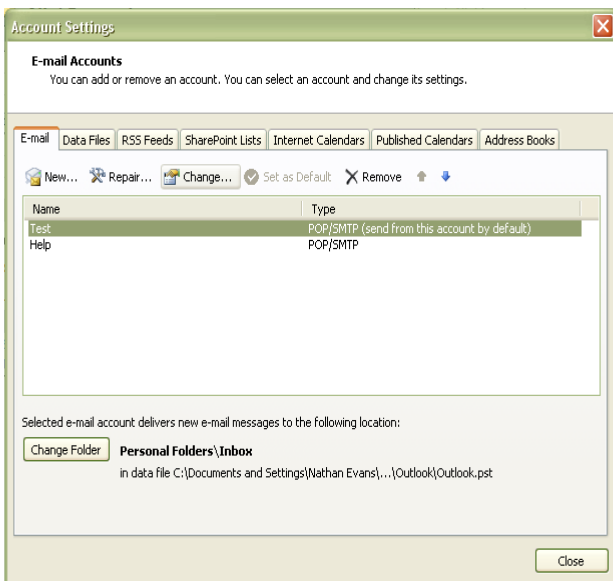


Microsoft Outlook

1. Go to Tools then Account Settings.....



2. Then select your account and click change or just double click on the account.



3. Under Server Information change the following
 - A. Change Incoming mail Server to: pop3.grm.net
 - B. Change Outgoing mail Server to: smtp.grm.net
4. Then Click More Settings...

Change E-mail Account

Internet E-mail Settings
Each of these settings are required to get your e-mail account working.

User Information
Your Name: Test
E-mail Address: Test@grm.net

Server Information
Account Type: POP3
Incoming mail server: pop3.grm.net
Outgoing mail server (SMTP): smtp.grm.net

Logon Information
User Name: Test
Password: *****
 Remember password
 Require logon using Secure Password Authentication (SPA)

Test Account Settings
After filling out the information on this screen, we recommend you test your account by clicking the button below. (Requires network connection)
Test Account Settings ...

More Settings ...

< Back Next > Cancel

5. Click on the Outgoing Server Tab
6. Check the Box that says My outgoing server (SMTP) requires authentication.
7. Then click the circle that says Use same settings as my incoming mail server.

Internet E-mail Settings

General **Outgoing Server** Connection Advanced

My outgoing server (SMTP) requires authentication

Use same settings as my incoming mail server

Log on using

User Name: natee
Password:

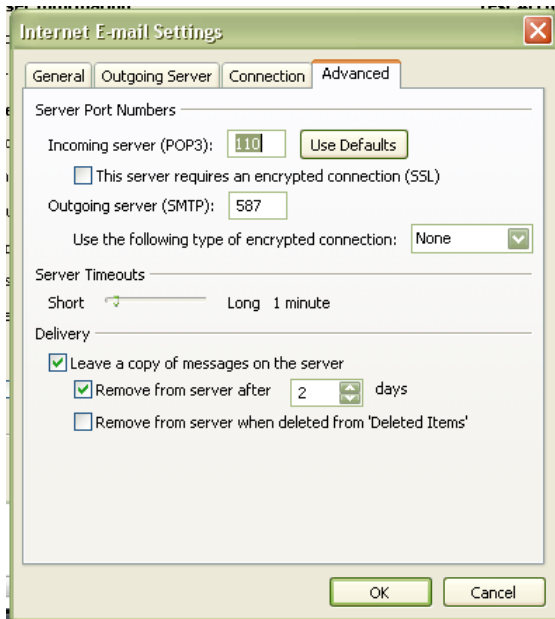
Remember password

Require Secure Password Authentication (SPA)

Log on to incoming mail server before sending mail

OK Cancel

8. Then click the Advanced Tab
9. Change the Outgoing server (SMTP) port to 587
10. Then click ok



You're done!