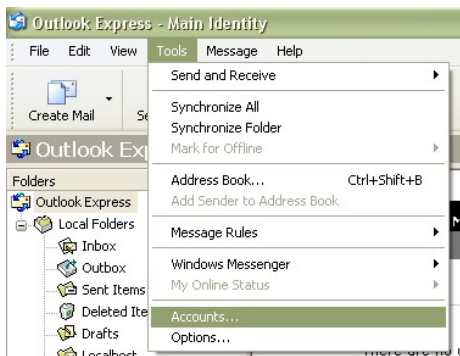
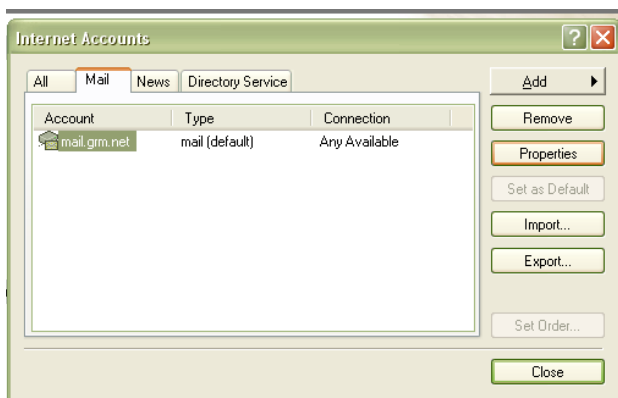


Outlook Express

1. Go to Tools then Accounts...



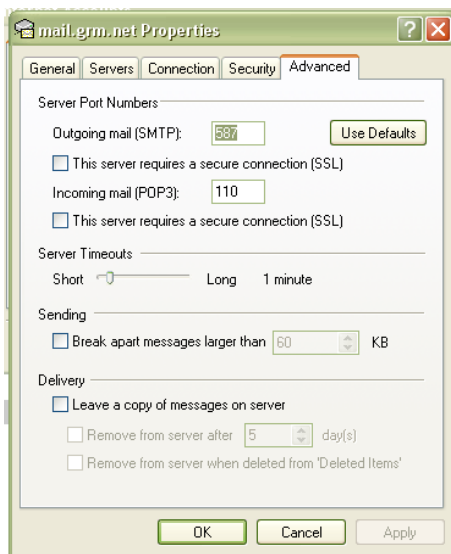
2. Click on the Mail Tab
3. Then Select your account and Click Properties



4. Change the Incoming mail (POP3) to pop3.grm.net and Outgoing mail (SMTP) to smtp.grm.net as seen below.
5. Check the box that says My server requires authentication.
6. Click Apply



7. Then Click the Advanced Tab
8. Change the Outgoing mail (SMTP) port to 587.
9. Then click Apply and then ok.



YOU ARE DONE.