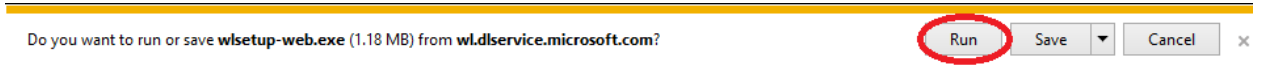


Windows 8 and Window Live Mail setup

(Windows 8 Mail does not allow pop/smtp e-mail for your GRM e-mail account. Setup Windows Live Mail, and it will work similar to using Windows Live Mail in Windows Vista or Window 7.)

1. Download [Windows Essentials](#) with contains Windows Live Mail
2. Select "Run" in the action bar to start the down and setup



a.

3. Click "Yes" on the 'User Account Control' to allow setup to start
4. Choose the default settings for setup

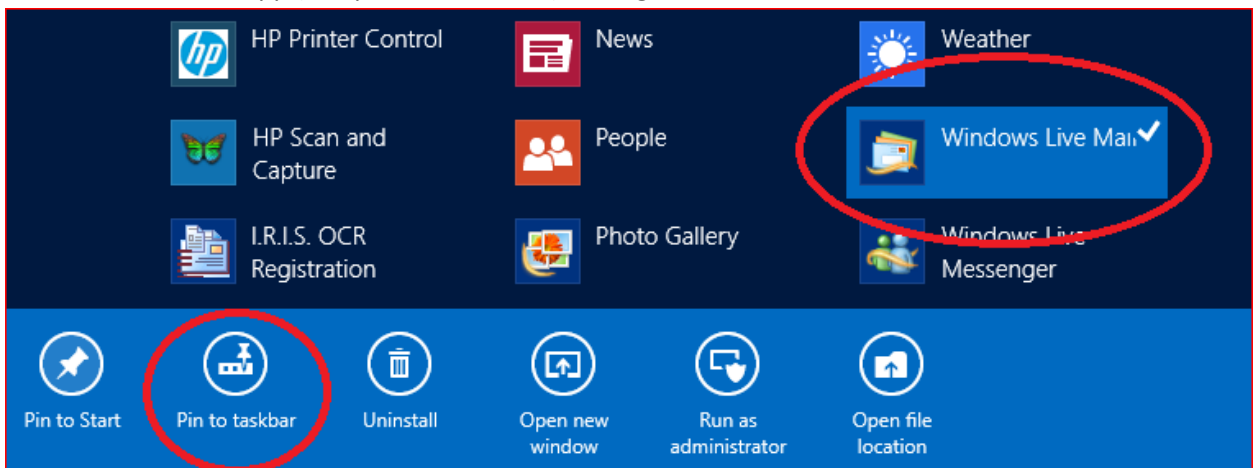


5. Click "Close" to finish setup when you see
6. Go to the 'Start' screen (Windows key)
7. Scroll right to see 'Apps'
8. Right click in empty space near your 'app' tiles, then go to bottom right to select "All apps"



a.

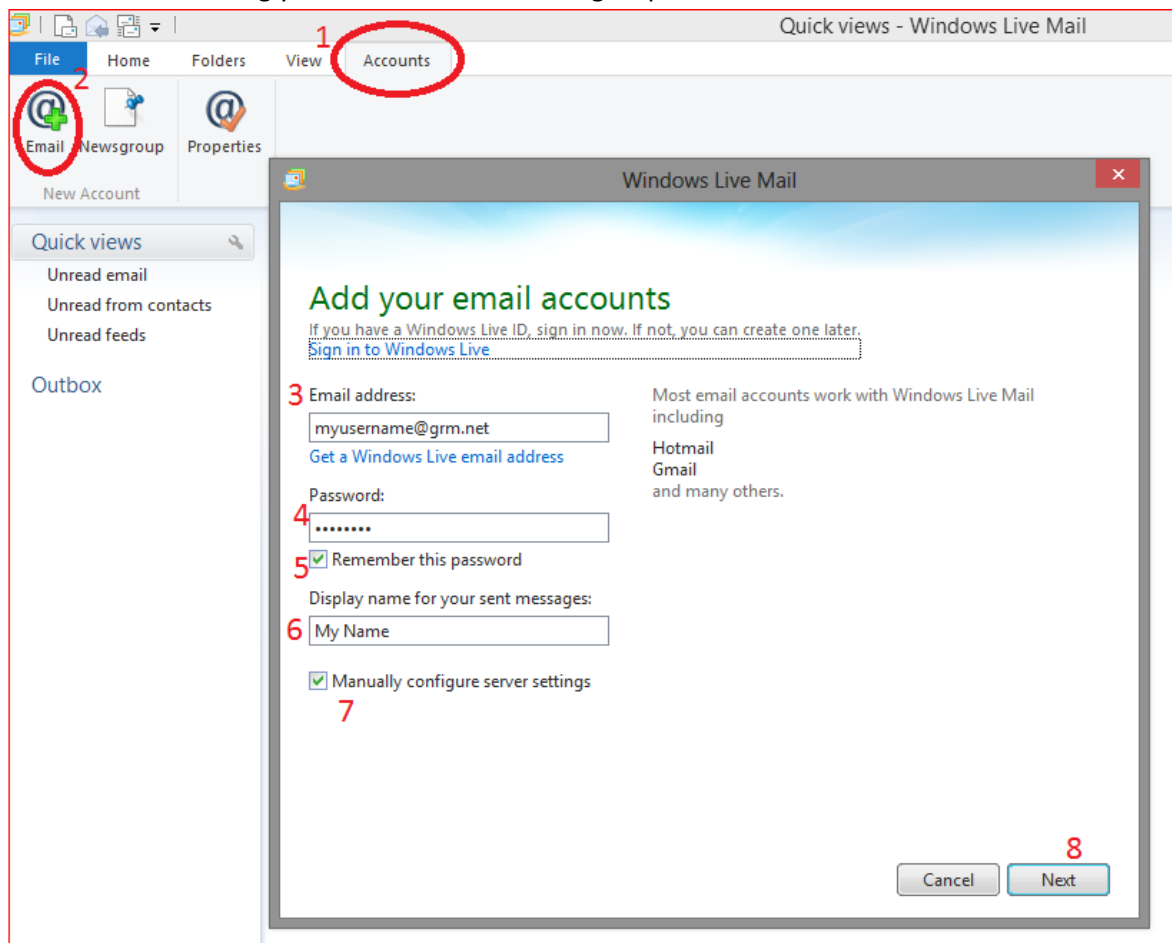
9. Find the Windows Live Mail app (in alphabetical order) and right-click then select to 'Pin to taskbar'



a.

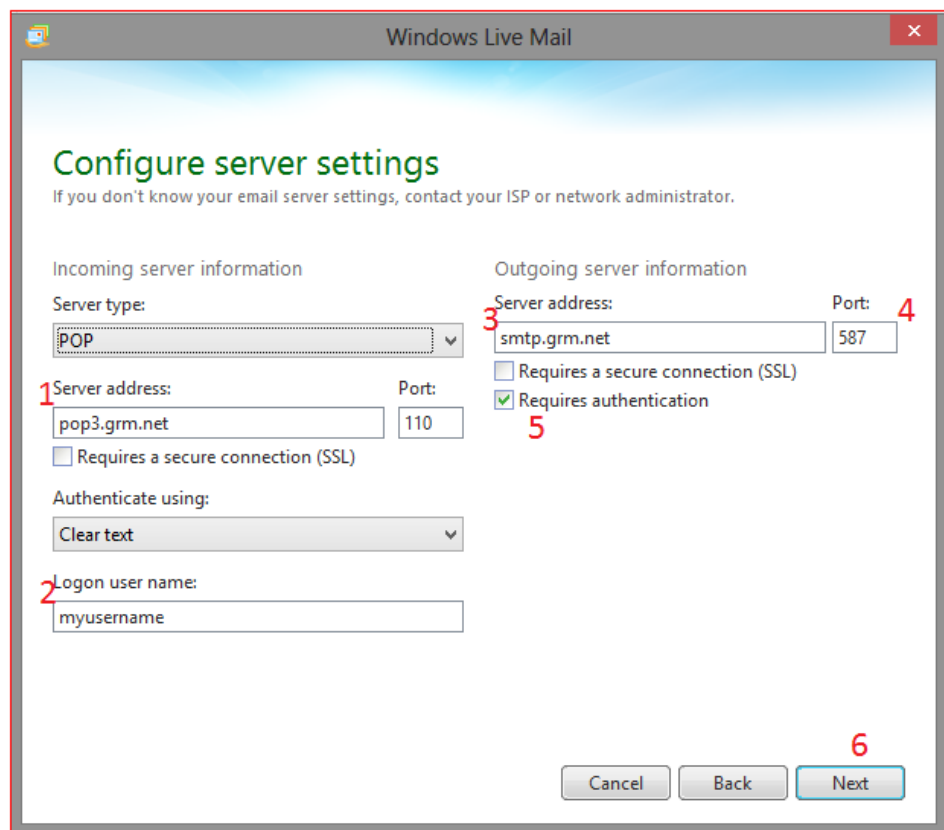
10. Go back to your desktop and open Windows Live Mail by selecting in in the taskbar

11. Add your e-mail account using your account info following steps 1-8 below



a.

12. After clicking 'Next', follow steps 1-6 below



a.

13. Finish